

EVENT SPACES

& PRIVATE HIRE



BIRDIES



CONTROL ROOM B



JOIA AT ART'OTEL



TAPAS BRINDISA



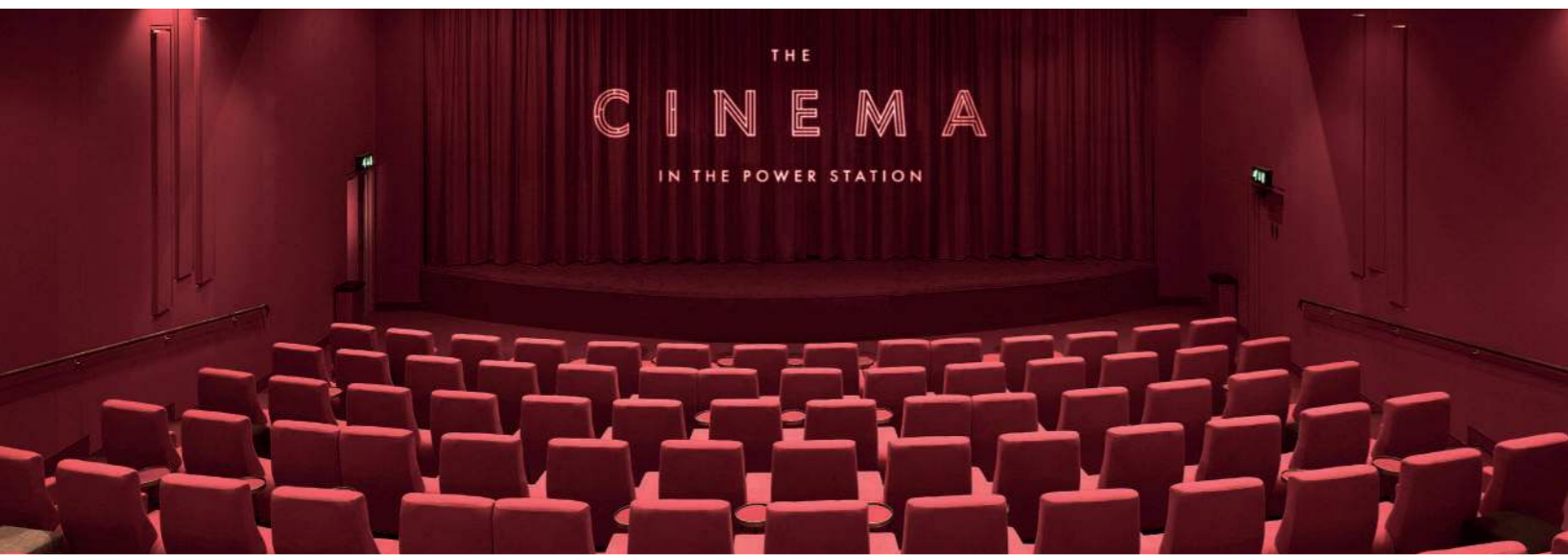
LIFT 109



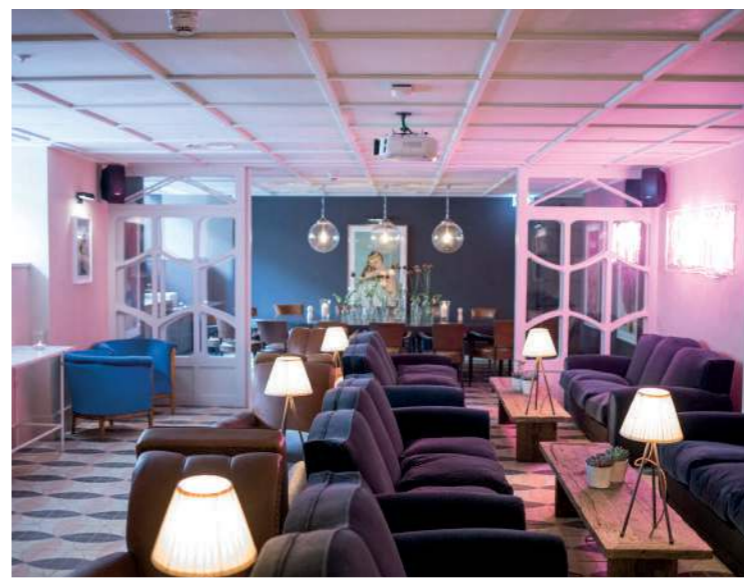
ART'OTEL RECEPTION



ROOFTOP POOL AND BAR AT ART'OTEL



THE CINEMA IN THE POWER STATION

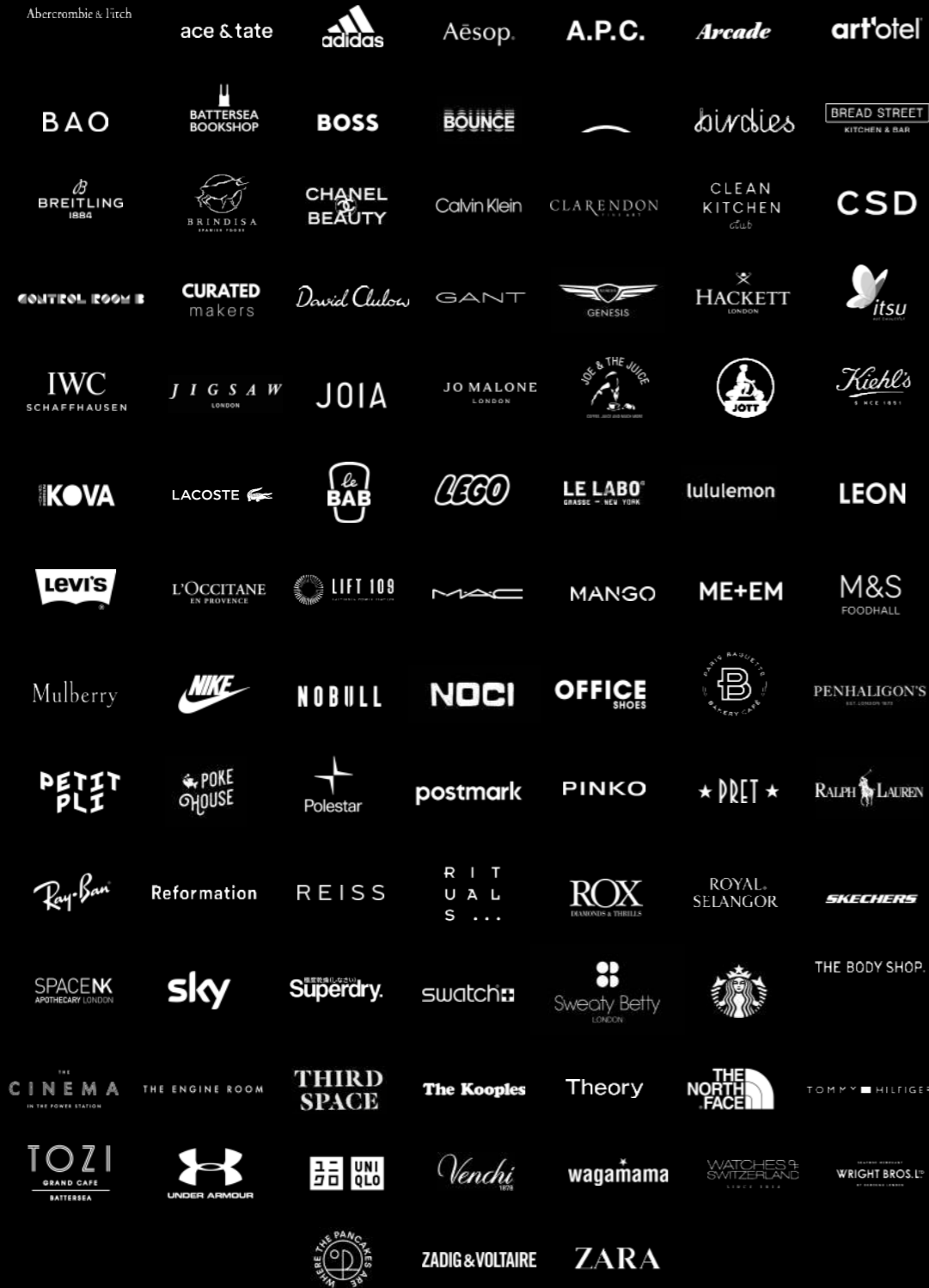


NO.29 POWER STATION WEST



BREAD STREET KITCHEN & BAR

A POWERFUL LINE-UP



GET OUR DIGITS

26M

predicted annual active footfall

800,000

sq ft of offices

2,500

new homes

180

new shops and restaurants

164

room boutique hotel

1

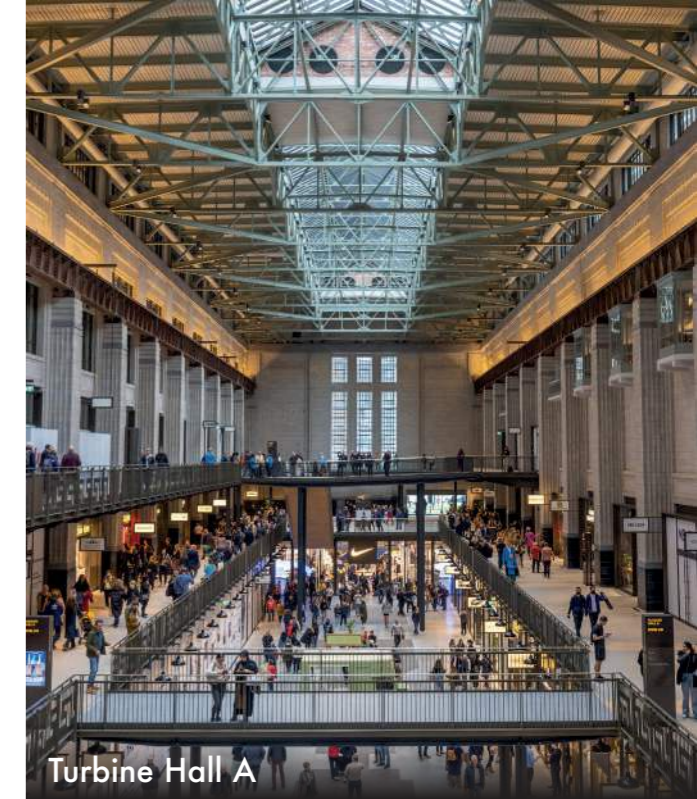
chimney lift visitor attraction

A LOOK BEHIND THE CURTAINS

A building shrouded in mystery and only seen by few, now open to the public for the very first time.



Tapas Brindisa



Turbine Hall A

A PLACE TO INDULGE

Dine around the world with restaurants specialising in the best Malaysian, British, Italian, Spanish, Japanese, Mediterranean and French cuisines among others.



NEVER ORDINARY

Battersea Power Station is London's most exciting visitor destination with many of the world's most iconic brands bringing creative one-of-a-kind concept stores to life.



Steeped in History

1933

Turbine Hall A is powered up



1944

Turbine Hall B is powered up

1955

Turbine Hall B construction is complete and at its peak the Power Station provides London with up to a fifth of its power



2012

The Power Station and surrounding area is purchased by a Malaysian consortium comprising Sime Darby, S P Setia and the Employees' Provident Fund

2017

Circus West Village (Phase 1) opens. Tunnelling for the Northern Line Extension is completed



2022

Battersea Power Station opens to the public

1929

Works begin on Battersea Power Station with Sir Giles Gilbert Scott joining the project



1937

Turbine Hall B construction begins



1975

Turbine Hall A is decommissioned

1983

The Power Station is closed

2007

The Power Station is upgraded to Grade II* listed status

2016

Apple commits to 500,000 sq ft of office space within the Power Station

2021

New Zone 1 Underground Station opens



A CULTURAL ICON

- > Pink Floyd 'Animals' album cover
- > Silver screen filming location for Batman The Dark Knight Rises, Monty Python and The King's Speech to name a few
- > A fashion powerhouse – shows and shoots from brands including Burberry, Belstaff, Harpers Bazar and Elle
- > Host to extraordinary events such as Holi Festival of Colours, Red Bull X Fighters and concerts from Elton John, Beyonce, Rihanna and more



YEAR ROUND EVENTS

- > Light Festival
- > Summer Celebrations
- > Food Festivals and Pop-Ups
- > Family-Friendly Half-Term Activations
- > Christmas Winter Village and Ice Rink



AT YOUR LEISURE

- > Two cinemas and a local theatre
- > Nine hole crazy golf and bar
- > Virtual reality arcade
- > Ping pong bar (coming soon)



WORK IT

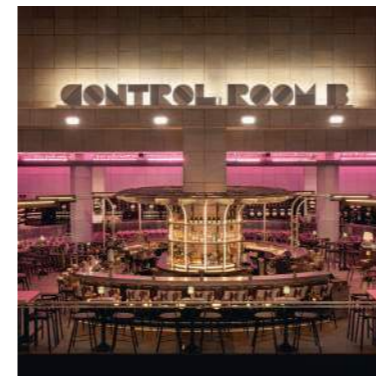
- > Over 800,000 sq ft of office space
- > Home to Apple's new 500,000 sq ft London campus and other renowned brands such as SharkNinja and IWG

" Battersea Power Station's £9bn makeover 'takes breath away' – Evening Standard



ONE OF A KIND SPACES

- > Glass chimney lift visitor attraction
- > Two unique turbine halls
- > Cocktail bar in the historic Control Room B



" Battersea Power Station has been reborn as London's new A-list address – Daily Mail



HIGHLY CONNECTED

Battersea Power Station's new Zone 1 Northern Line station means the Power Station is just 13 minutes from the West End and 12 minutes from the City.

- 
UNDERGROUND
 Accessible to 92% of stations with just one change
- 
RAILWAY
 Four of UK's busiest railway stations just 10 minutes away
- 
AIRPORTS
 35 minutes to Gatwick, 45 minutes to Heathrow
- 
BUSES
 88 buses per hour, over five routes
- 
RIVER
 Uber Boat by Thames Clippers
- 
CYCLING ROUTES
 Santander bike hubs and ample cycle parking

THE POWER STATION

RESTAURANTS, BARS & PRIVATE HIRE SPACES

ARCADE FOODHALL

Arcade is a digital-first global food and drink destination in the iconic Battersea Power Station housing kitchens that travel the world, from Cantonese char siu to North Indian butter chicken and fiery Thai stir fries.

They work closely with the most exciting talent in food to develop bespoke menus for groups of 12 to parties of 700 for birthdays, company get togethers and everything in between. Their unique app-to-table ordering system enables your guests to order from their extensive menu, customising to individual dietary requirements and tastes.

Capacity:

Full venue private hire: 100 - 600 pax

Tap Room: 100 - 250 pax

ABC Bar: 30 - 40 pax

Pool Room: 46 - 100 pax

Private Dining Room: 10 - 40 pax

Location: Level 1, North Atrium

Email: events@arcade-london.com

Number: 020 3307 8138

Website: arcadefoodhall.com/arcade-battersea





BOUNCE

Impress your team by being among the first in to hold your conference, Ping Pong party or social at Battersea Power Station.

Select an exclusive area or hire the full venue in this expansive and energetic space. With bespoke menus, drinks packages and the charisma of our Games Gurus to host the crowd, you just need to sit back and soak in the fun.

Capacity:

Exclusive hire: 300 pax

Location: Level 1, Turbine Hall B

Email: bookings@bouncepingpong.com

Website: bouncepingpong.com/locations/battersea/

BREAD STREET KITCHEN & BAR

Bread Street Kitchen & Bar is an all-day dining restaurant from Gordon Ramsay, bringing a distinct New York loft feel to Battersea Power Station's Turbine Hall A.

Renowned for its electric atmosphere, the restaurant bar is available for private hire. From cocktail or drinks receptions to group dining for lunch or dinner, and exclusive hire of the whole venue.

Capacity:

Exclusive hire: 200 pax
Group dining: 40 seated
Chef's Table: 8 seated

Location: Level 1, Turbine Hall A

Email: privatediningandevents@gordonramsay.com

Number: 020 7592 1373

Website: gordonramsayrestaurants.com





THE CINEMA IN THE POWER STATION

The Cinema In The Power Station is the ultimate location to enjoy the latest releases in an exquisite cinema with two screens, state-of-the-art Dolby Cinema and reclining seating.

With fine wines, champagnes, craft beers, house-made cocktails, popcorn, sweet and savoury treats all available to enjoy at your seat. Both screens have private boxes seating two or four people, complete with your very own mini-bar.

Capacity:

Screen 1: 213 seats

Screen 2: 139 seats

Location: Level 3, Turbine Hall B

Email: events@thecinemainthepowerstation.com

Number: 020 3330 7120

Website: thecinemainthepowerstation.com



CONTROL ROOM A

The 1930s control room is a private space that celebrates the history of Battersea Power Station.

From the restored switchboards and control panels to the Art Deco glass ceiling, this authentic space is an unforgettable setting for events.

Teak parquet floors, marble finishings and an elaborate gold-coffered glass ceiling bring Art Deco glamour at its most authentic. It offers a unique space for receptions, fashion shows, dinners, lunches, and activations.

Capacity:

Standing: 250 pax

Seated: 100 pax

Location: Turbine Hall A

Email: hello@spacesstories.com

Number: 020 3319 9332

Website: spacesstories.com/space/control-room-a-battersea-power-station/





CONTROL ROOM B

Situated on its own private mezzanine floor and overlooking one of the two historical turbine halls, Control Room B provides an unrivalled setting for private parties of up to 200 guests.

Patrons will have the chance to get an up-close view of the Control Room's original dials, control desks and switchgear racks that have been restored to their former glory.

Taking pride of place in the room, there is a beautiful centrepiece bar, which is a turbine-inspired radial sculpture – paying tribute to the character and form of Battersea Power Station's electric history.

With its vibrant furniture, industrial design and stainless steel control desks, the entire space is a homage to the dawn of the modern age – fusing British mid-century aesthetics with the beauty of Brutalism and the dynamism of mechanics.

Capacity:

Standing: 200 pax

Location: Upper Ground Floor, Turbine Hall B

Email: events@controlroomb.com

Number: 020 7590 3606

Website: controlroomb.com

LE BAB

Le Bab is known for its expert reimagination of gourmet kebabs, reflecting a mixture of Levantine cuisines with global influence.

The restaurant, located on Level 1 in Turbine Hall A, Le Bab Battersea offers both private hire and semi-exclusive spaces for events of any kind.

Their Art Deco-inspired interiors and a commitment to offering an unparalleled dining experience, makes them the perfect choice to host your social gathering, corporate event, Christmas party or birthday celebration.

Capacity: 300 pax

Location: Level 1, Turbine Hall A

Email: info@eatlebab.com

Website: www.eatlebab.com





LIFT 109

London's brand-new glass elevator will take you up the inside of one of Battersea Power Station's iconic chimneys and from 109 metres above ground you'll enjoy epic 360-degree views of the city skyline.

The journey begins in the magnificent Art Deco Turbine Hall A where, through a carefully curated ensemble of original records and evocative media displays, you'll delve into the building's rich history and discover how it has reinvented and transformed through time.

Continuing onwards and upwards, constellations of light guide your way as the circular glass elevator makes its ascent up the north-west chimney and from 109 metres at the top you will take in a panoramic view like no other.

Capacity: 100 pax

Location: Level 1, Turbine Hall A

Email: Mollie.stonham@img.com

Number: 020 8233 5838

Website: lift109.co.uk



SEARCYS' CHAMPAGNE BAR

Set against the backdrop of the stylish 1930s Art Deco Turbine Hall A, Searcys Champagne Bar offers a special space for hosting your event. The bar features plush, deep velvet seating, polished brass detailing, and a striking marble-topped bar. The walls are adorned with three specially commissioned art pieces with a Searcys' twist by celebrated artist Kristijana Williams.

From reserving the perfect spot for a small group to making Searcys entirely your own for the evening, we can create the perfect bubble in which to get the bubbles flowing. Enquire today about making your occasion even more special. Whether you're planning a corporate event, birthday party or family reunion, we have the perfect space for you.

Capacity: 80 pax

Location: Level 1, Turbine Hall A

Email: batterseaevents@searcys.co.uk

Website: searcys.co.uk/venues/searcys-champagne-bar-at-battersea-power-station/



CIRCUS WEST VILLAGE

RESTAURANTS, BARS & PRIVATE HIRE SPACES

THE CINEMA IN THE ARCHES

Located on Arches Lane, The Cinema In The Arches is an intimate cinema with three bespoke screens built into the railway arches in Circus Circus Village.

Enjoy the intimate surrounds of this luxurious boutique cinema, created for your viewing pleasure with state-of-the-art sound and vision. There are a number of packages available for private hire, depending on your needs.

Location: Arches Lane

Number: 020 3330 7120

Website: thecinemainthepowerstation.com





CINNAMON KITCHEN

Cinnamon Kitchen Battersea is a sleek, urban-inspired pan-Indian restaurant from renowned chef Vivek Singh, located on Arches Lane.

The restaurant has a semi private mezzanine floor that seats 20 guests or a full venue hire seats up to 120 guests. Part hire is also available for up to 50 guests. Please note, there is no hire fee but a minimum spend must be agreed in advance.

Capacity: 120 pax

Location: Arches Lane

Email: events@cinnamon-kitchenbattersea.com

Number: 020 3995 5075

Website: cinnamon-kitchen.com

BATTERSEA BREWERY

Battersea Brewery is dedicated to creating amazing beers in South West London.

With a taproom on site, the beer can't get any fresher as it's pumped directly into their tanks from the brewery. Located under the arches, Battersea Brewery offers a semi-private space upstairs for 50 standing and full hire upon request.

Capacity: 50 pax

Location: Arches Lane

Email: hello@batterseabrew.co.uk

Number: 020 8161 2366

Website: batterseabrew.co.uk





BIRDIES

Brought to you by the masters of fun behind SFG Club in Stratford, Birdies is the ultimate crazy golf experience and cocktail bar under the arches at Battersea Power Station.

From group packages to entire takeovers of the venue, Birdies also offer a drool-worthy menu and creative cocktail list guaranteed to blow your socks off.

Capacity: 150 pax

Location: Arches Lane

Email: info@playbirdies.com

Number: 020 3011 1188

Website: playbirdies.com

FIUME

Fiume is a modern Italian restaurant inspired by the Amalfi Coast from Italian chef Francesco Mazzei.

The restaurant overlooks the river Thames with amazing views of the Power Station chimneys and is available to hire exclusively for private dining events of up to 90 seated guests or standing drinks receptions of up to 150 guests.

Capacity: 150 pax

Location: Circus West Village Riverside

Email: fiumeevents@danddlondon.com

Number: 020 3904 9010

Website: fiume-restaurant.co.uk





NO.29 POWER STATION WEST

No.29 Power Station West has a number of private spaces for a wide range of events; from a bespoke meeting space or private dining event, to a wedding or cocktail reception.

Why not book an intimate screening in their cinema room? If you really need to celebrate in style, in a beautiful riverside location next to Battersea Power Station, why not take an exclusive hire as the sun sets over the Thames.

Capacity: 600 pax

Location: Circus West Village Riverside

Email: reservations@no29powerstationwest.co.uk

Number: 020 3857 9872

Website: no29powerstationwest.co.uk

TAPAS BRINDISA

Overlooking the river Thames with the iconic Battersea Power Station as a backdrop, Tapas Brindisa Battersea is the culmination of over 30 years' experience as purveyors of Spanish food and culture.

The private dining room fits up to 14 people and boasts its own kitchen, so you can enjoy the cooking action up close with friends.

Tapas Brindisa can also be hired out exclusively for 120 seated and 200 standing.

Capacity:

Seated: 120 pax

Standing: 200 pax

Location: Circus West Village Riverside

Email: battersea@tapasbrindisa.com

Number: 020 8016 888

Website: brindisakitchens.com





VAGABOND WINES

Battersea Power Station is the home of Vagabond Wines' Urban Winery, where all Vagabond English wines are produced.

The winery offers an interactive wine experience where you can enjoy over 100 wines by the glass.

The whole venue is available for hire boasting indoor and outdoor space, accommodating 120 people. There are also numerous other semi-private spaces suitable for more intimate occasions.

Capacity: 120 pax

Location: Circus Road West

Email: battersea@vagabondwines.co.uk

Number: 020 4599 8604

Website: vagabondwines.co.uk



WRIGHT BROTHERS

Wright Brothers are Battersea Power Station's resident seafood specialists and have a special private dining room for hire.

The Coal Room seats up to 24 people and offers a selection of delicious set and sharing style menus.

Alternatively, the creative culinary team are on hand to guide you in creating your own bespoke menu.

Capacity: 24 pax

Location: Circus West Village Riverside

Email: info@thewrightbrothers.co.uk

Number: 020 7324 7734

Website: thewrightbrothers.co.uk



ELECTRIC BOULEVARD

RESTAURANTS, BARS & PRIVATE EVENT SPACES



ART'OTEL

London's first art'otel has opened at Battersea Power Station.

The hotel is located within Battersea Roof Gardens, a new building designed by Foster+ Partners forming a key part of Electric Boulevard, a new high street for London.

With 164 rooms designed by award-winning Spanish artist and interior designer Jaime Hayon, art'otel will feature JOIA, a new skyline destination restaurant bar, rooftop swimming pool, as well as a gym, spa, event facilities and a Grand Cafe.

The hotel will offer six creative meeting and events spaces across two floors.

Capacity:

Creative Meeting Spaces: 250 pax

Location: Electric Boulevard

Email: events.battersea@artotel.com

Website: artotellondonbattersea.com

DISHOOM

Set against a backdrop fusing Bombay nostalgia and futurism, Dishoom Battersea pays loving homage to the Irani cafés that were once part of the fabric of life in Bombay.

Open from 8am each day, the menu is a celebration of Bombay comfort food, offering a journey through the city's diverse food culture - from hearty Breakfast Naan Rolls, to lunchtime feasts.

The Permit Room, set on the lower ground of the café, offers a semi-private space for breakfast and lunches to be enjoyed in a stunning, retro-futuristic space. Full use of the Permit Room is available for semi-private hire, Monday - Wednesday from 8am with last seating at 2pm.

Capacity: 58 pax

Location: Electric Boulevard

Email: Jason@dishoom.com

Number: 020 7420 9327

Website: www.dishoom.com/battersea/





JOIA

JOIA is a fabulous new concept created by two Michelin starred Portuguese chef Henrique Sa Pessoa, located on the 14th, 15th and 16th floors of art'otel London Battersea Power Station.

JOIA will offer guests a restaurant, bar and rooftop with dramatic views overlooking the iconic Battersea Power Station and celebrate dishes showcasing Henrique's vibrant, unique and fresh take on traditional plates using the best of British and Iberian produce.

Capacity: 250 pax

Location: Electric Boulevard
Email: events.battersea@artotel.com
Website: joiabattersea.co.uk



KEY CONTACTS AND LINKS

WEBSITE: [BATTERSEAPOWERSTATION.CO.UK](https://batterseapowerstation.co.uk)

SITE MAP: [BATTERSEAPOWERSTATION.CO.UK/RETAILERS/?BRAND-MAP=SHOW](https://batterseapowerstation.co.uk/retailers/?brand-map=show)

CONTROL ROOM A: [HELLO@SPACESSTORIES.COM](mailto:hello@spacesstories.com)

FOR LIFT 109: [MOLLIE.STONHAM@IMG.COM](mailto:mollie.stonham@img.com)

FOR ART'OTEL: [EVENTS.BATTERSEA@ARTOTEL.COM](mailto:events.battersea@artotel.com)

FOR RESTAURANTS AND BARS (SEE INDIVIDUAL PAGES)

FOR COMMERCIALISATION OPPORTUNITIES: [COMMERCIALISATION@BPSDC.CO.UK](mailto:commercialisation@bpsdc.co.uk)

batterseapowerstation.co.uk

    @BatterseaPwrStn

DISCLAIMER — MAY 2023. This document, and all plans, images and information contained, does not form part of any contract. Plans, areas, capacities and images are indicative only and whilst reasonable effort has been made to ensure their accuracy, this cannot be guaranteed. This brochure, is disclosed without responsibility to the owner of the Battersea Power Station and is not intended to be relied on. The Battersea Power Station group of companies exclude all liability for any errors or omissions in this brochure, to the fullest extent permitted by law.

